

MagicTrader Plus

Android Streamer version

User Guide



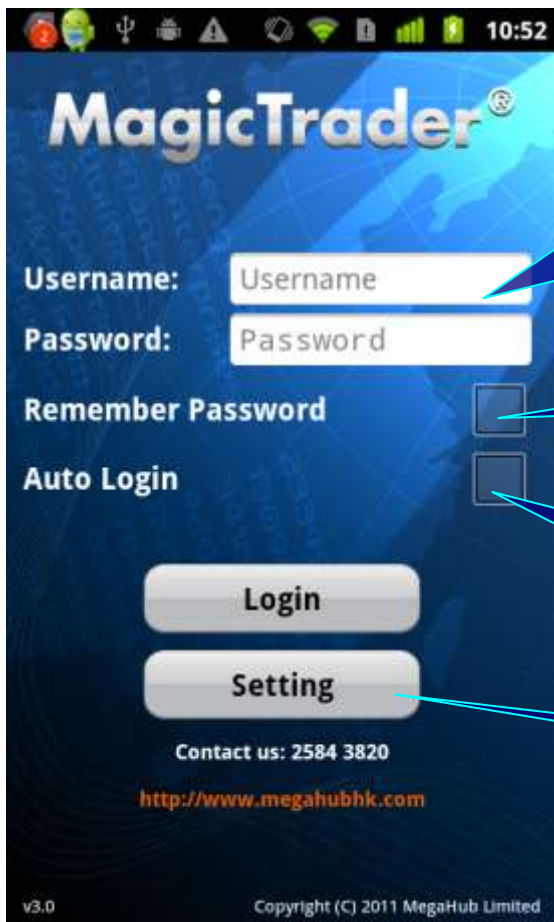
Produced by MegaHub Limited



Customer Service : (852) 2584-3820 / cs@megahubhk.com

This product described in this manual is the subject of continuous development and improvement. Whilst all information of a technical nature and particulars of the product and its use are given in good faith, MegaHub by publishing this document, does not guarantee that any information contained herein is and will remain accurate or that use of information will ensure correct and faultless operation of the relevant service or equipment. MegaHub, its agents and employees shall not be liable for any loss or damage whatsoever resulting from reliance on the information contained herein.

(c) 2012 Copyright, MegaHub Limited. All rights reserved



1a. Type in your Login ID and Password on the login page of MagicTrader Plus and press login.

Remark : Wing Lung Customer need to add "wl_" as a prefix to existing login ID.

1b. Save your Username and Password.

1c. Directly enter the home page after the opening MagicTrader Plus program.

1d. Enter the language setting page.



2. Enter the quotation page after successful login.

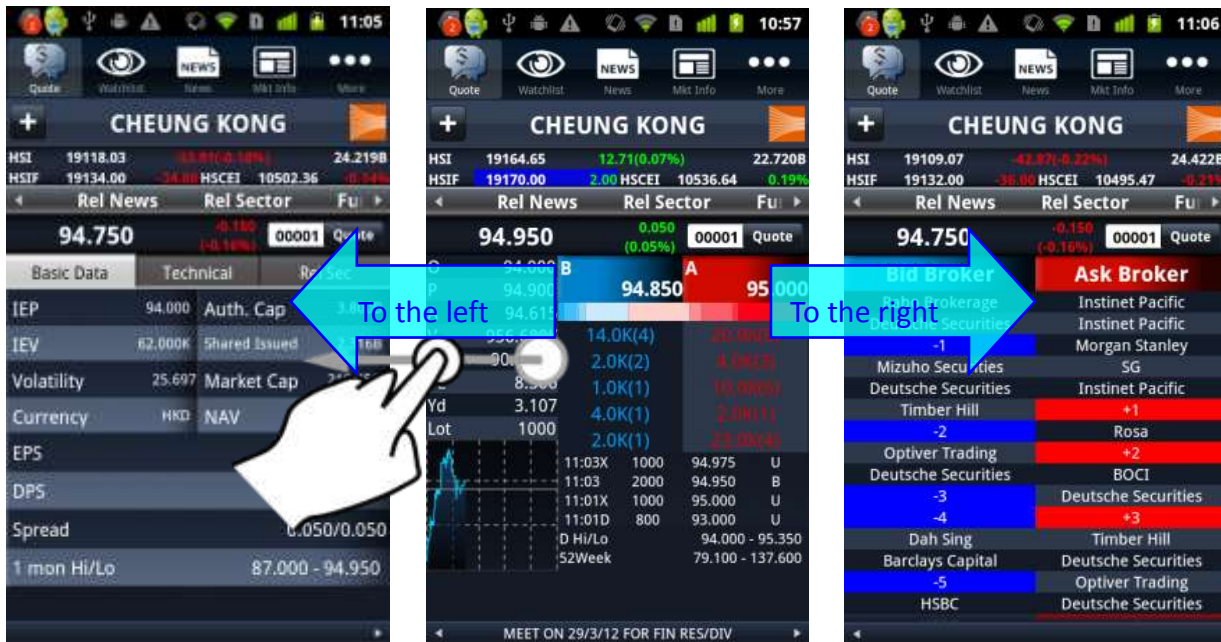


3. Press the Bid/Ask column to view 10 Bid/Ask queue.



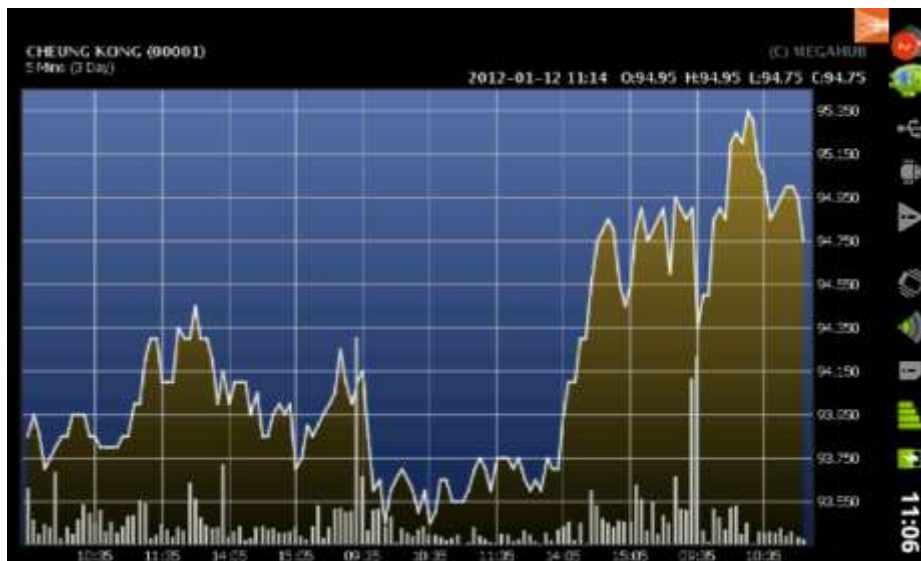
4. To change stock code,
 I. Type in the stock code in the input box
 II. Press enter

5. Slide the screen to left or right to find the following,
 - I. Basic Data, Technical Indexes and Related Securities
 - II. Broker Queue



6. View Brokers' names by pressing "Bid Broker ID" or "Ask Broker ID" bar.

- View the detailed stocks chart by rotating the android device horizontally. Slide the chart to left or right to change the time interval of the chart.



8. View the related news by pressing “Rel News”. Press the news to view it in detail.





11. View the Bid/Ask, volume and turnover of the stocks in the related sector by pressing this icon



12. View the following by pressing "Fundamental".

- i. market data
- ii. corporation profile
- iii. balance sheet
- iv. P&L
- v. finance ratio
- vi. dividend history

Year End	Period	Payable Date	Effective
12/2011	Interim	2011-09-23	2011-09-12
12/2010	Final	2011-05-25	2011-05-11
12/2010	Interim	2010-09-22	2010-09-10
12/2009	Final	2010-06-01	2010-05-18
12/2009	Interim	2009-10-06	2009-09-24
12/2008	Final	2009-05-26	2009-05-12
12/2008	Interim	2008-10-10	2008-09-29
12/2007	Final	2008-05-27	2008-05-13
12/2007	Interim	2007-10-12	2007-10-02
12/2006	Final	2007-05-22	2007-05-08
12/2006	Interim	2006-10-13	2006-10-03

13. View the details by pressing the dividend record.

Time	Volume	Price	B/A
11:15	10K	94.550	B
11:14	2000	94.600	A
11:14	1000	94.600	A
11:14	2000	94.550	B
11:14	2000	94.650	B
11:14	1000	94.650	B
11:14	7000	94.700	B
11:13	2000	94.750	A
11:08	1000	94.750	A
11:07	1000	94.750	B
11:07	3000	94.800	B
11:07	1000	94.800	B

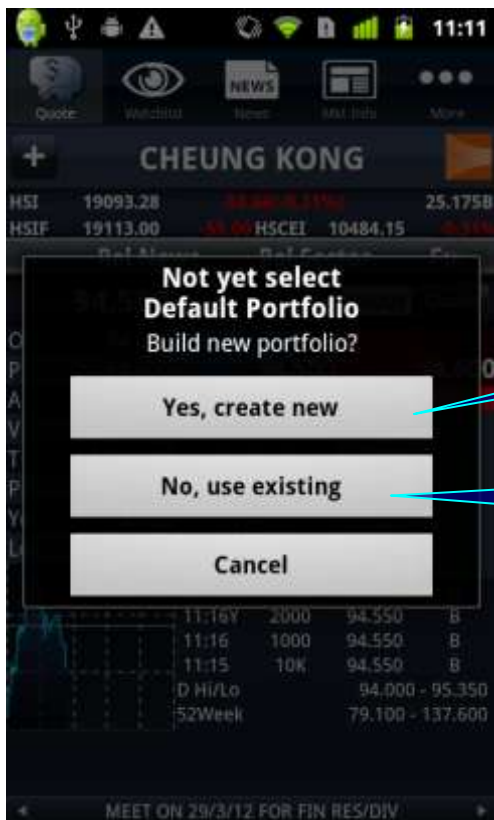
14. View the transaction Log by pressing "Trans Log".



15. View the graphs of VWAP and MFI&MF by pressing "Money Flow".

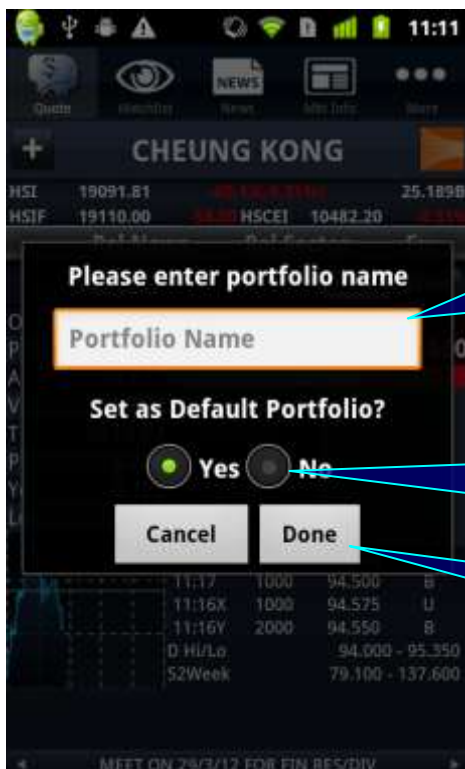


16. Add the stock to Portfolios by pressing this icon.



17a. Create a new portfolio and add the stock to it by pressing "Yes, create new".

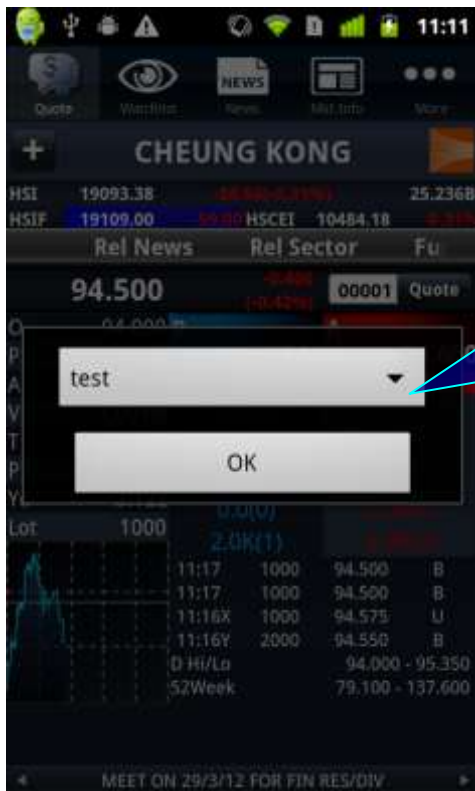
17b. Add the stock to the default portfolio by pressing "No, use existing".



18 a. Enter the name of the new portfolio in the blank after pressing "Yes, create new".

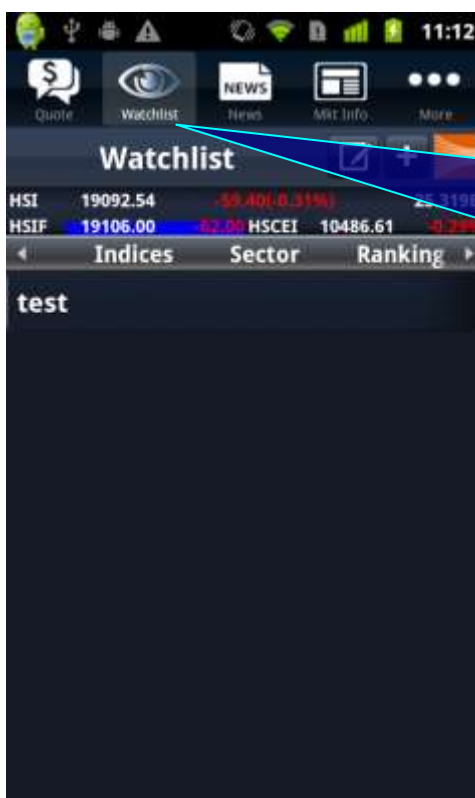
18b. Set the new portfolio to be default portfolio by pressing "Yes".

18c. Press "Done".



19. If you have not set the default portfolio, follow the steps after pressing “No, use existing”.

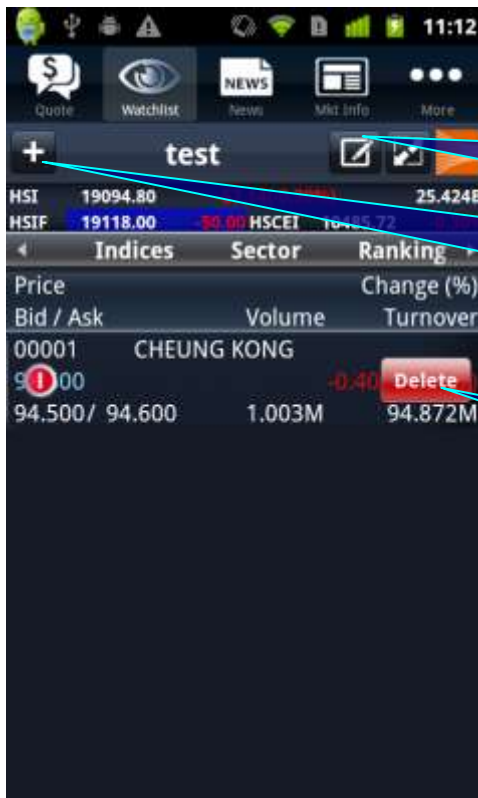
- I. Choose the portfolio
- II. Press “OK”



20. Enter the portfolio page by pressing “Watchlist”. Each portfolio can contain up to 20 stocks and automatically synchronize with PowerTicker 2.0.



21. View the Bid/Ask, volume and turnover of the stocks by pressing this icon.



22a. Change the content of the portfolio by pressing this icon.

22b. Add a stock to the portfolio by pressing this icon and entering the stock code.

22c. Delete the stock from the portfolio by pressing the icon on the left and "Delete".



23. Enter the news page by pressing "News".



24a. Filter the news sources of the "Custom" page by pressing this icon.

24b. Enter the stock code to search the news.



25a. View the filtered news by pressing "Custom".

25b. Enter the stock code to search the news.



26a. View HKEx news by pressing "HKEx News".

26b. Enter the stock code to search the news.



27a. View Dow Jones news by pressing "Dow Jones".

27b. Choose the news type.

27c. Enter the stock code to search the news.



28. Enter the Local Index page by pressing "Mkt Info". Real-time local indices are displayed.

///



29a. View the chart by pressing the index.

29b. View the constituents of the index by pressing the arrow.



30. View delayed major world indices by pressing "World Index".



31. View the performance of Sectors by pressing "Sector".



32. View the volume, turnover, Bid/Ask of the stocks in the sector by pressing this icon.

Price	Change(%)
06210 VALE COMMON-DRS	1.500 (0.86%)
03020 X DBMSCIUSA	1.200 (0.50%)
00044 HAECO	1.100 (1.07%)
00053 GUOCO GROUP	1.000 (1.31%)
00303 VTECH HOLDINGS	0.850 (1.02%)
00945 MANULIFE-S	0.850 (0.97%)

33. View Top 20 of stock, HSCEI, red chips, GEM, Warrants and CBBC in the following categories:

Net gain, net loss, % gain, %loss, volume, turnover, 52 week high, 52 week low.

Name	H Share	A Share	Premium
NE ELECTRIC	0.740	2.820	-78.63%
SICHUAN EXPRESS	3.030	3.640	-16.76%
TSINGTAO BREW	42.250	32.170	6.84%
JIANGSU EXPRESS	7.290	5.700	4.04%
BEIREN PRINTING	1.500	4.160	-70.07%
KUNMING MACHINE	2.370	6.060	-60.70%
GUANGZHOU SHIP	6.090	16.210	-62.44%
MAANSHAN IRON	2.830	2.590	10.11%
SHANGHAI PEICHEM	2.860	6.200	-52.47%
ANGANG STEEL	6.130	4.690	6.33%
JINGWEI TEXTILE	3.780	9.780	-60.56%
JIANGXI COPPER	17.960	23.510	-23.60%

34. View the information of A share and H share by pressing "A+H".



35. View the change % of the A share and H share and the stock code by pressing this icon.



36. Four Options are displayed on "More" page.



37a. Enter the company fundamental page by pressing "Fundamental" of the "More" page. View marketing information by pressing the items.

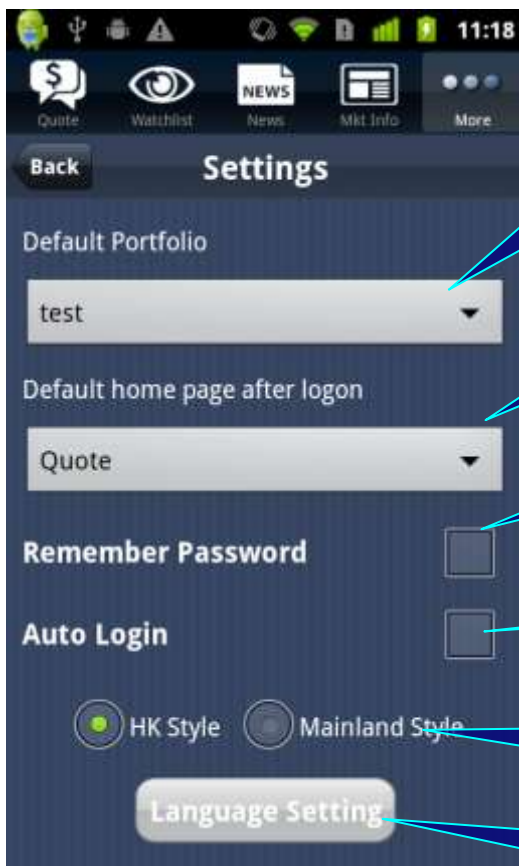
37b. View the company fundamental.



38. Enter the foreign exchange page of USD by pressing "FX" of the "More" page.



39. View the foreign exchange page of HKD by pressing "HKD"



40a. Set the default portfolio.

40b. Set the default home page.

40c. Save the Login ID and Password.

40d. Directly enter the home page after the MagicTrader Plus program is opened.

40e. Set the Style. Red for drop and green for rise for "HK Style"; red for rise and green for drop for "Mainland Style".

40f. Choose language between English, Traditional Chinese, Simplified Chinese and Japanese.



41. View the disclaimer by pressing
“About MegaHub” of the “More” page.

--End--